



Remote Video Speaker Microphone VM682

Hytera's Remote Video Speaker Microphone (RVM) allows the user to capture, store and share video, audio and image evidence from the field. The device integrates a body worn camera with a remote speaker microphone. When paired with Hytera's Multi-mode Advanced Radio, the RVM allows a user to make and receive voice communications, activate an emergency alarm and deliver real-time video back to a control center over an LTE network. The RVM is designed to function even in low light conditions.

The Hytera RVM docks into a specially designed multi-unit charger to auto export audio, video, image and log files to the Digital Evidence Management (DEM) software. The DEM ensures the captured digital content remains tamper-proof until it can be transferred securely to the control center.



Camera

Outstanding Recording Performance

- 180° Rotatable & 140° Wide-angle Lens
- 16-megapixel Image Sensor
- 1080P @ 60FPS
- Six Infrared LED



Keys

Ergonomic Design for Easy Operation

- PTT
- Playback
- Emergency Call Button
- Channel Change
- One-touch Operation for Capture Video/Voice Recording

Structure Design

Professional for Mission Critical Scenario

- MIL-STD-810 G/IP67
- Speaker (2 Watt)
- Light Weight

Battery

- 2500 mAh Removable
- ≥8 hrs (Working)
- ≥250 hrs (Standby)

Connection

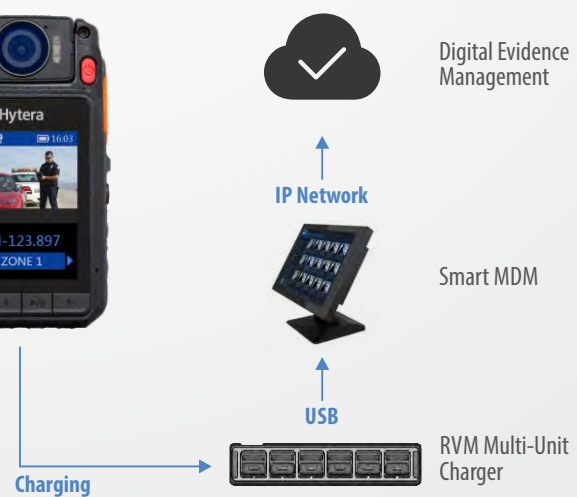
- Wired/BT 4.0/ Wi-Fi
- Real-time Video Send Back Solution

RVM Data Transfer and Collection Solution

Real-time Data/Video Transfer



Data/Video Storage & Collection



RVM Multi-Unit Charger

- Charge six RVMs and six batteries simultaneously
- Provide power indication, battery charging status, and data transmission indication
- Auto export audio, videos, photos and log files ※
- Reprogram and upgrade the RVM ※

Note

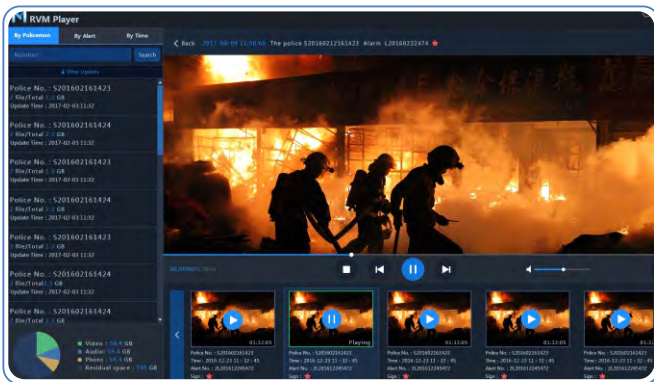
※ indicates that the function needs to be coupled with MDM via USB cable.

Specifications:

Input: 12 V/7 A
Output: 2*6*5 V/1 A
Interface: USB



Smart Mobile Device Management



Running on a PC, Smart MDM collects and stores digital evidence from the RVM'S via Multi-Unit Charger. With intuitive graphic user interface (GUI), you can review, manage, and share data simply and efficiently.

Highlights:

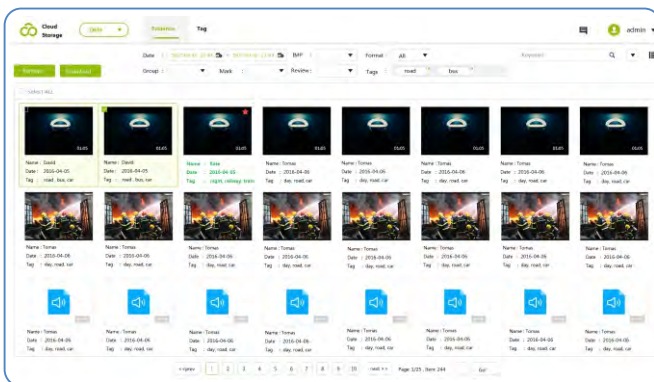
RVM Management

- Comprehensively manage the RVM devices
- Programming and upgrading the software/firmware

Data Processing

- Query and replay the local data
- Import and upload the data to the DEM automatically
- Clear the collected data automatically

Digital Evidence Management



Digital Evidence Management Platform collects and stores the digital evidence on a secure network. You can tag and find it easily through a key word search. For data security, you can assign customized permissions to different users.

Highlights:

Centralised Data Management

- Cloud server for centralised storage with RVM automatic data upload
- System log for evidence retrieval. Classify file evidences, and correlate them with case, Global Navigation Satellite System (GNSS) location information
- Capable of gathering and organising a large amount of data
- Rich interface to be compatible with other systems

Redundancy and Security

- Redundancy backup, load balancing mechanism for reliability
- User authorisation for security

Specifications

Size & Weight	Dimensions (H x W x D)	106.5mm x 60mm x 24mm
	Weight	<170g (including battery)
Camera	Image Sensor	16-megapixel
	Lens	Fixed Focus, all glass, 180° rotatable, diagonal 140°, horizontal 106°, vertical 78°
	Focus Range	0.1 m - infinity
Battery	Battery life (continuous video shooting)	≥8 hours
	Battery Capacity	2500 mAh
	Charging Time	≤4 hours
Display	Dimensions	2.4-inch
	Resolution	240(RGB) * 320 Dot
	Type	TFT-LCD 262K color display
Recording	Internal Memory	16 GB (standard configuration); 32 GB/64 GB/128 GB (optional)
	Video Format	mp4
	Video Encoding Technology	H.264
	Video Resolutions	VGA, 720P, 1080P
	Video Frames Per Second	30FPS and 60FPS
	Audio Format	AAC (Advanced audio coding)
	Image Format	JPG
	Image Resolution	4608*1296 (16-megapixel), 3072*1728 (5-megapixel), 2304*1296 (3-megapixel)
Audio	Pre-recording/Post-recording	20s/30s
	Speaker Power	2 Watt
Connectivity	Microphone	Silicon microphone x 1, -38 dB; electret microphone x 1, -42 dB
	Wi-Fi	802.11 b/g/n Access point and station support
	BT	BT4.0 Audio and BLE support
Auxiliary	Connector	Mirco USB port, 10-pin contact port
	IR Lamp	OSRAM x 6
	Night Vision Range (without lighting)	≥3 m
Durability	White LED	1 Watt x 1
	Ingress Protection	MIL-STD-810G, IP67
	Drop Resistance	1.5 m
	ESD	Contact discharge: 6 kV; air discharge: 12 kV
Compatibility	Operating Temperature	-20°C to +60°C
	Storage Temperature	-40°C to +85°C
	System Compatibility	WIN XP/7/8/10
Accessories	Radio Compatibility	Hytera Radios
	Standard	USB cable, charger, clip (rotatable, length-adjustable)
	Optional	Shoulder epaulette, radio connection cable, multi-unit charger, Wireless Remote controller

All specifications are subject to change without notice due to continuous development.

Accessories



RVM to PDC/PTC series Cable
RVM to PD7/9 series Cable
RVM to X1/Z1 series Cable



Clip



Wireless Ring PTT



Charger



Battery

Hytera
Respond & Achieve

Hytera Authorized Dealer:
Alpha Prime Communications
Sales . Rentals . Service
1808 Janke Drive, Suite E
Northbrook, IL 60062 USA
847-298-4000 . service@alphaprimecomm.com



3315 Commerce Parkway, Miramar, FL 33025, United States
Telephone: +1(954)846-1011

8 Whatney, Suite 200, Irvine, CA 92618, United States
Telephone: +1(949)326-5740

1916 Wright Boulevard, Schaumburg, IL 60193, United States
Telephone: +1 (213) 262-3578

Hytera retains right to change the product design and specification. Should any printing mistake occur, Hytera doesn't bear relevant responsibility. Little difference between real product and product indicated by printing materials will occur by printing reason.

HYT, Hytera are registered trademarks of Hytera Communications Co.,Ltd.
© 2018Hytera Communications Co.,Ltd. All Rights Reserved.